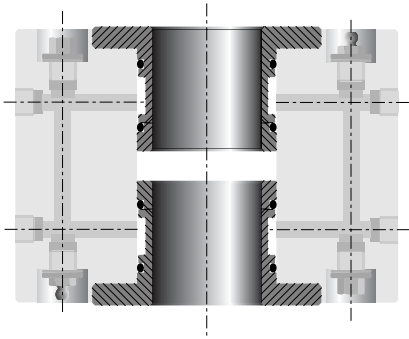
**DESIGN:**

- High tensile steel body with 4,6 or 8 teeth
- Available in 22° or 12° hook angle
- Precise serration (60°, 1.6mm pitch) ensure tight and accurate positioning of knives
- With dual-chamber hydro-clamping to ensure precise concentricity tolerance
- High radial running accuracy and low operating vibration

APPLICATION:

- For profiling at high feed rates with superior surface finish
- Use HSS or Stellite tipped knives for solid woods
- Use carbide tipped knives for exotic woods and MDF (see page C20)
- On moulders

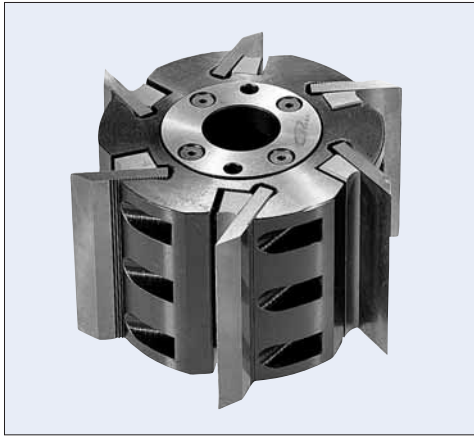


Grease fittings mounted on both ends of toolheads for easy access.

PART NO. 22° HOOK	PART NO. 12° HOOK	DIAM. ØD	KERF B	BORE ød	NO. TEETH	MAX. RPM
1901022	1901012	137mm 5-3/8"	60mm 2-3/8"	40mm 1-1/2"	4	8900
1901122	1901112	137mm 5-3/8"	80mm 3-1/8"		4	8900
1901222	1901212	137mm 5-3/8"	100mm 4"		4	8900
1901322	1901312	137mm 5-3/8"	130mm 5-1/8"		4	8900
1901422	1901412	137mm 5-3/8"	150mm 6"		4	8900
1901522	1901512	137mm 5-3/8"	180mm 7"		4	8900
1901622	1901612	137mm 5-3/8"	230mm 9"		4	8900
1902022	1902012	150mm 6"	60mm 2-3/8"	1-1/2", 1-13/16", 2-1/8" 40mm, 50mm	4	8000
1902122	1902112	150mm 6"	80mm 3-1/8"		4	8000
1902222	1902212	150mm 6"	100mm 4"		4	8000
1902322	1902312	150mm 6"	130mm 5-1/8"		4	8000
1902422	1902412	150mm 6"	150mm 6"		4	8000
1902522	1902512	150mm 6"	180mm 7"		4	8000
1902622	1902612	150mm 6"	230mm 9"		4	8000

continued on C13...

...continued from C12



PART NO. 22° HOOK	PART NO. 12° HOOK	DIAM. ØD	KERF B	BORE ød	NO. TEETH	MAX. RPM
1903022	1903012	150mm 6"	60mm 2-3/8"	1-1/2", 1-13/16", 2-1/8" 40mm, 50mm	6	8000
1903122	1903112	150mm 6"	80mm 3-1/8"		6	8000
1903222	1903212	150mm 6"	100mm 4"		6	8000
1903322	1903312	150mm 6"	130mm 5-1/8"		6	8000
1903422	1903412	150mm 6"	150mm 6"		6	8000
1903522	1903512	150mm 6"	180mm 7"		6	8000
1903622	1903612	150mm 6"	230mm 9"		6	8000
1904022	1904012	163mm 6-3/8"	60mm 2-3/8"	1-13/16", 2-1/8" 50mm	6	7600
1904122	1904112	163mm 6-3/8"	80mm 3-1/8"		6	7600
1904222	1904212	163mm 6-3/8"	100mm 4"		6	7600
1904322	1904312	163mm 6-3/8"	130mm 5-1/8"		6	7600
1904422	1904412	163mm 6-3/8"	150mm 6"		6	7600
1904522	1904512	163mm 6-3/8"	180mm 7"		6	7600
1904622	1904612	163mm 6-3/8"	230mm 9"		6	7600
1905022	1905012	163mm 6-3/8"	60mm 2-3/8"	1-13/16", 2-1/8" 50mm	8	7600
1905122	1905112	163mm 6-3/8"	80mm 3-1/8"		8	7600
1905222	1905212	163mm 6-3/8"	100mm 4"		8	7600
1905322	1905312	163mm 6-3/8"	130mm 5-1/8"		8	7600
1905422	1905412	163mm 6-3/8"	150mm 6"		8	7600
1905522	1905512	163mm 6-3/8"	180mm 7"		8	7600
1905622	1905612	163mm 6-3/8"	230mm 9"		8	7600

Replacement Parts

Product	Product Name	PART NO.
	Screw for Flanges M6 x 16mm	W500605
	Grease Nipple	W501810
	Release Valve	W501811
	Grease Gun	1T463HP
	T-Handle Allen Wrench	W400113 3mm W400115 5mm

Replacement Parts

TOOLHEAD KERF	WEDGE PART NO.	WEDGE SCREW PART NO.
60mm (2-3/8")	W301805	W501409
80mm (3-1/8")	W301807	W501409
100mm (4")	W301809	W501409
130mm (5-1/8")	W301812	W501409
150mm (6")	W301814	W501409
180mm (7")	W301817	W501409
230mm (9")	W301822	W501409

Other sizes available upon request.

When ordering, add bore size to part no. (ie: 1901022-40 for 40mm bore)