



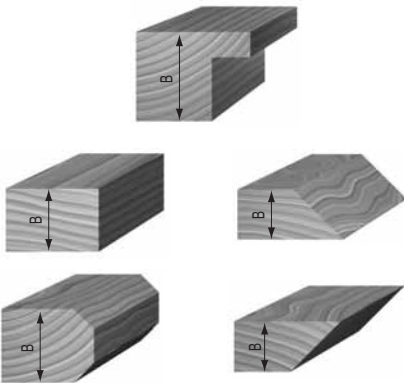
DESIGN:

- High Tensile steel body with 2 teeth
- Progressively adjustable from 0° to 70°
- Additional interlocking cutter for rabbet cuts available upon request, toolhead must be set to the 0° position
- Tungsten carbide reversible inserts with 2 cutting edges

APPLICATION:

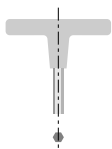
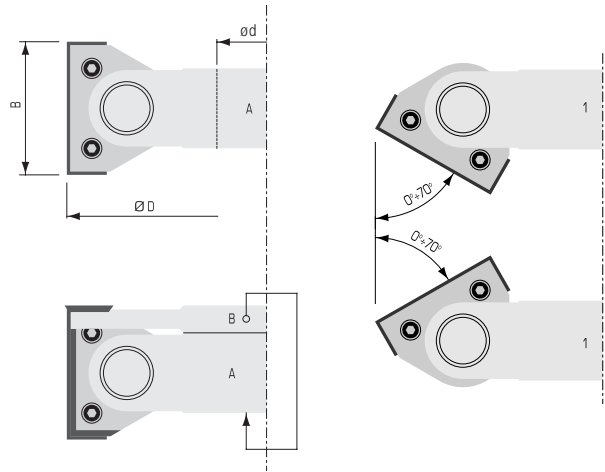
- For jointing and chamfering solid wood and panel materials veneered and plastic coated
- On shapers, double-end tenoners and moulders

PART NO.	DIAM. ØD mm	KERF B mm	BORE ød	MAX. BORE ød mm	NO. TEETH	NO. SPURS	CUTTER TYPE	RPM MIN.- MAX.
1T2001M	160	50	1-1/4"	40	2		A	5000-7500
1T2002M	160	8	1-1/4"	40		2	B	5000-7500
1T2004M	170	50	50mm	50	2		A	4700-7000
1T2005M	170	8	50mm	50		2	B	4700-7000



0° - B max= 48	35° - B max= 39
5° - B max= 48	45° - B max= 33
10° - B max= 47	50° - B max= 30
15° - B max= 46	55° - B max= 26
20° - B max= 45	60° - B max= 23
25° - B max= 43	65° - B max= 19
30° - B max= 41	70° - B max= 15

Other sizes available upon request.



T-HANDLE ALLEN WRENCH
PART NO. W400113 3mm

ALLEN WRENCH
PART NO. W400007 8mm

Replacement Parts

DESCRIPTION	KNIFE	SPUR	SPUR SCREW	WEDGE	WEDGE SCREW
PART NO.	305000			W302602	W501401
DIMENSIONS	50x12x1.5			47	M6x12
PART NO.		301404	W500002		
DIMENSIONS		14x14x2.0	M5x7		