



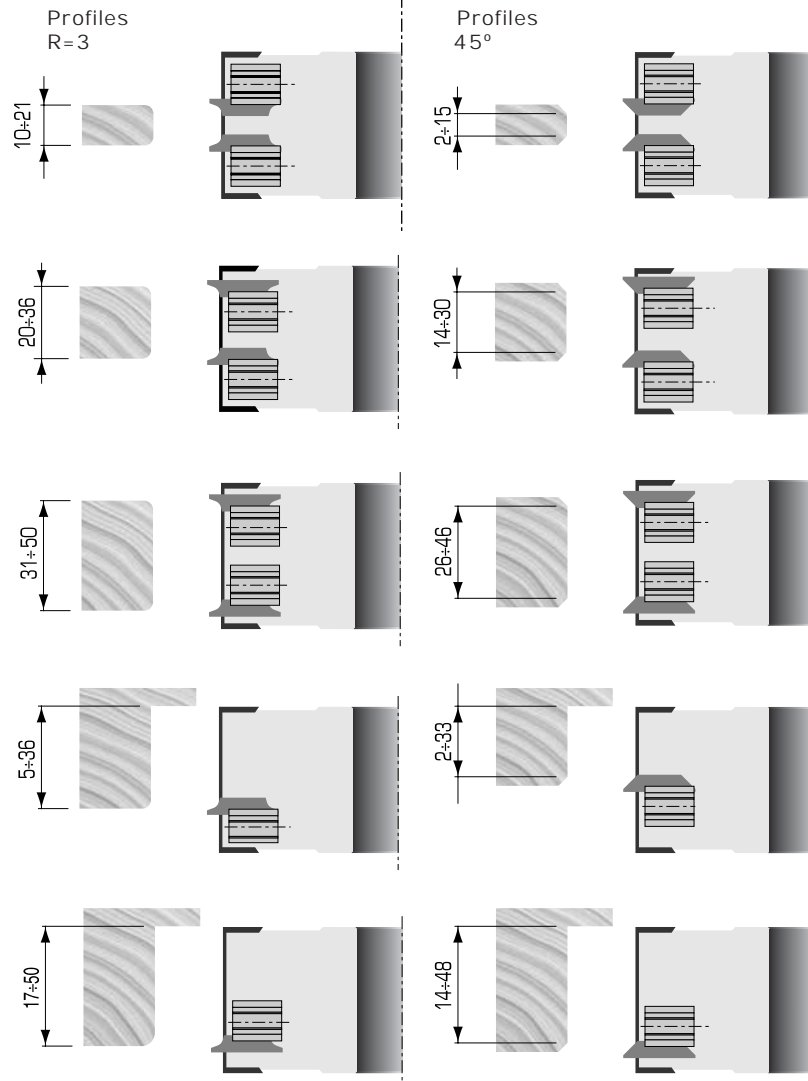
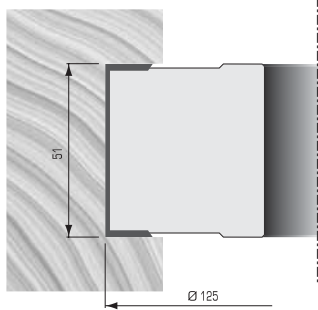
DESIGN:

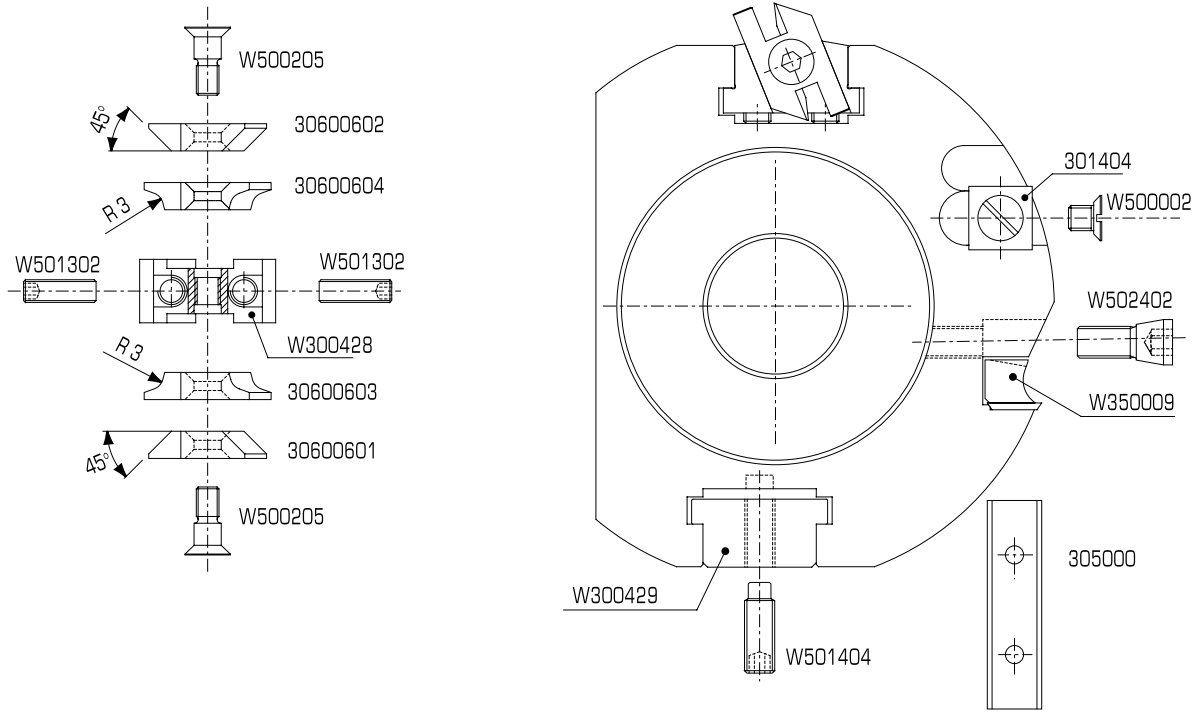
- High tensile steel body with 2 teeth, alternating shear angle
- Reversible tungsten carbide inserts with 2 and 4 cutting edges
- Toolhead supplied in a wooden box complete with set of tungsten carbide knives for chamfering, corner rounding, jointing and rabbeting
- Adjustable for various wood thickness

APPLICATION:

- For chamfering, corner rounding, jointing and rabbeting solid wood, MDF, particle board and plywood
- On shapers, double-end tenoners and moulders

PART NO.	DIAM. ØD mm	KERF B mm	BORE ød INCH	MAX. BORE ød mm	NO. TEETH	NO. SPURS	NO. CHAMFER & RADIUS INSERTS	RPM MIN.-MAX.
1T511	125	51	1-1/4"	50	2	4	4	6000-10500



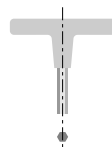


Replacement Parts

DESCRIPTION	RH/LH CHAMFER KNIFE (45°)	RH/LH ROUNDING KNIFE R=3	HEX SCREW	INSERTS ADJUSTMENT UNIT	SCREW	FILLER BLOCKS	SCREW
PART NO.	30600601/02	30600603/04	W500205	W300428	W501302	W300429	W501404
DIMENSIONS	27x6x16	27 x 6 x 16	M6x15	14x30x16.5	M6x16	48x30x15	M8x20

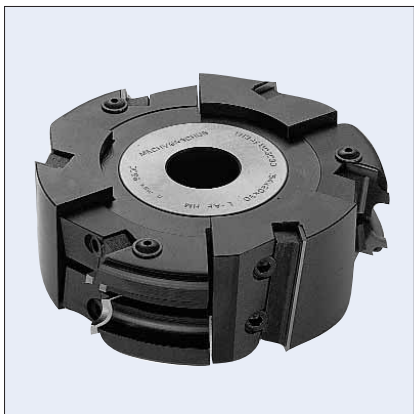
Replacement Parts

DESCRIPTION	KNIFE	WEDGE	WEDGE SCREW	SPUR	SPUR SCREW
PART NO.	305000	W350009	W502402	301404	W500002
DIMENSIONS	50x12x1.5	46	M7x21	14x14x2	M5x7



T-HANDLE ALLEN WRENCH
 PART NO. W400113 3mm
 PART NO. W400114 4mm
 PART NO. W400115 5mm

1T580 ROUNING & CHAMFERING ADJ. TOOLHEADS



DESIGN:

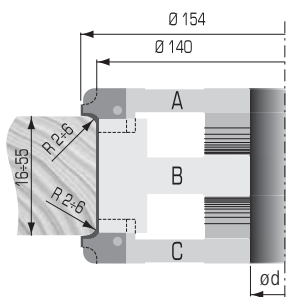
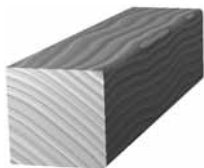
- High tensile steel body with 3 teeth on a shear angle
- Set of 3 interlocking toolheads with set of spacers, adjustable for various wood thickness
- Knives for toolheads "A" and "C" are sold separately
- Toolhead "B" is supplied with 1 set of knives
- Tungsten carbide insert knives

APPLICATION:

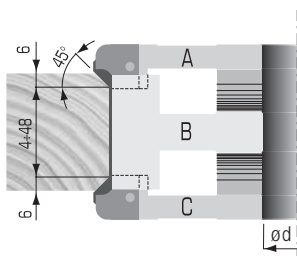
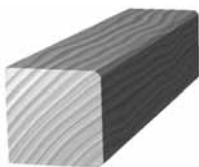
- For jointing, corner rounding and chamfering in solid wood and panel materials
- On shapers, double-end tenoners and moulders

PART NO.	DIAM. ØD mm	KERF B mm	BORE ød	MAX. BORE ød mm	NO. TEETH	CUTTER TYPE	RPM MIN.-MAX.
1T580 COMPLETE SET	154	20	1-1/4"	50	3	A	5600-9500
	140	50	1-1/4"	50	3	B	5600-9500
	154	20	1-1/4"	50	3	C	5600-9500

Cutters A and C excluding knives
Other sizes available upon request.

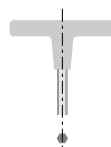


KNIFE	DIMENSIONS	R	PART NO.
	20x20.5x2	2	402002
	20x20.5x2	3	402003
	20x20.5x2	4	402004
	20x20.5x2	5	402005
	20x20.5x2	6	402006
	20x20.5x2	$\alpha=45^\circ$	402020



Replacement Parts

TOOL TYPE	DESCRIPTION	KNIFE	WEDGE	WEDGE SCREW
TYPE A	PART NO.	SEE TABLE	W350055	W502402
	DIMENSIONS	20x20x5.2	16	M7x21
TYPE C	PART NO.	SEE TABLE	W350053	W502402
	DIMENSIONS	20x20x5.2	16	M7x21
TYPE B	PART NO.	305000	W350009	W502402
	DIMENSIONS	50x12x1.5	46	M7x21



T-HANDLE ALLEN WRENCH
PART NO. W400115 5mm