

1T530 MITRE JOINT TOOLHEADS 45°



DESIGN:

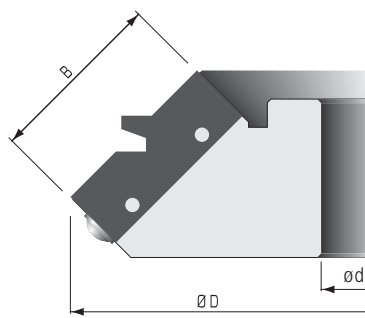
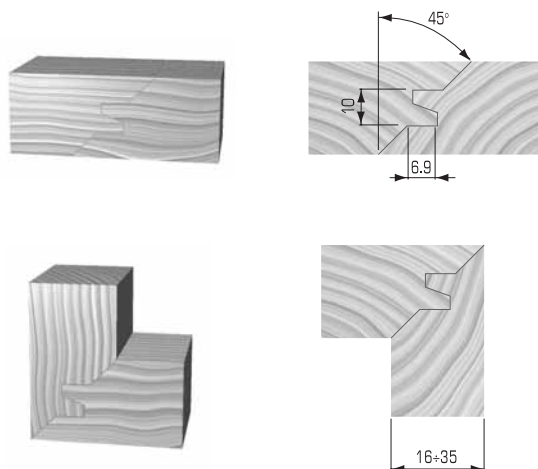
- High tensile steel body with 2 teeth
- Produces 45° lock mitre Joints
- Disposable tungsten carbide inserts

APPLICATION:

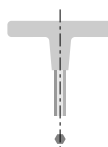
- For cutting 45° lock mitre joints in solid wood and panel materials in two steps: First with the workpiece in horizontal position and then with workpiece in vertical position
- Suitable for various material thickness from 5/8" to 1-3/8"
- On shapers

PART NO.	DIAM. ØD mm	KERF B mm	BORE ød	MAX. BORE ødmm	NO. TEETH	RPM MIN. - MAX.
1T5301M	170	50	1-1/4"	40	2	4500-7800

Other sizes available upon request.



Replacement Parts			
DESCRIPTION	KNIFE	WEDGE	WEDGE SCREW
PART NO.	1T530A	W350009	W502402
DIMENSIONS	50x25x2	46	M7x21



T-HANDLE ALLEN WRENCH
PART NO. W400115 5mm

1T540 MITRE JOINT TOOLHEADS 45°



DESIGN:

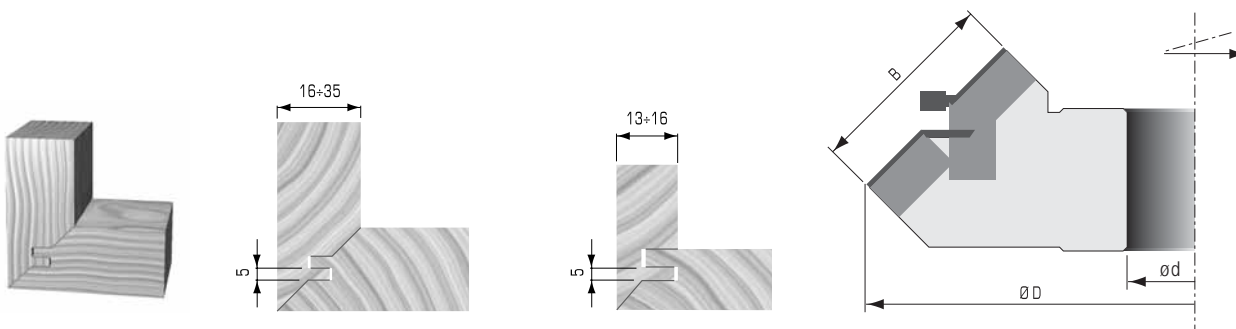
- High tensile steel body with staggered tooth design
- Produces 45° lock mitre Joints
- Reversible tungsten carbide inserts with 2 or 4 cutting edges

APPLICATION:

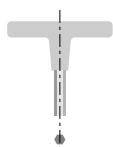
- For cutting 45° lock mitre joints in solid wood and panel materials in two steps: First with the workpiece in horizontal position and then with workpiece in vertical position
- Suitable for various material thickness from 5/8" to 1-3/8"
- On shapers

PART NO.	DIAM. ØD mm	KERF B mm	BORE ød mm	MAX. BORE ød mm	NO. TEETH	NO. SPURS	NO. GROOVING INSERTS G	RPM MIN.-MAX.
1T5401M	170	52	35	50	4+2	2	2	4500-8500

Bore can be opened or bushed to spindle diameter
Other sizes available upon request.



Replacement Parts							
DESCRIPTION	KNIFE	SPUR	SPUR SCREW	WEDGE	WEDGE SCREW	RH GROOVING INSERTS G	SCREW FOR GROOVING INSERTS
PART NO.	302000	301404	W500002	W350005	W502402	307814	W500205
DIMENSIONS	20x12x1.5	14x14x2	M5x7	16	M7x21	48x5x16	M6x15



T-HANDLE ALLEN WRENCH
PART NO. W400114 4mm
PART NO. W400115 5mm