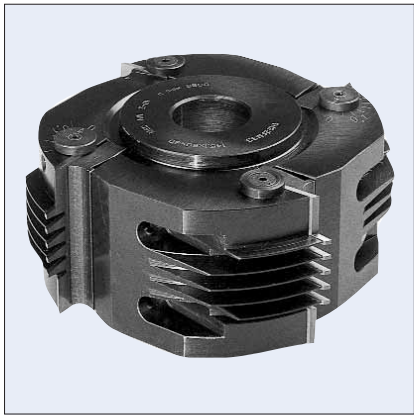


1T550 GLUE JOINT TOOLHEADS - ADJUSTABLE



DESIGN:

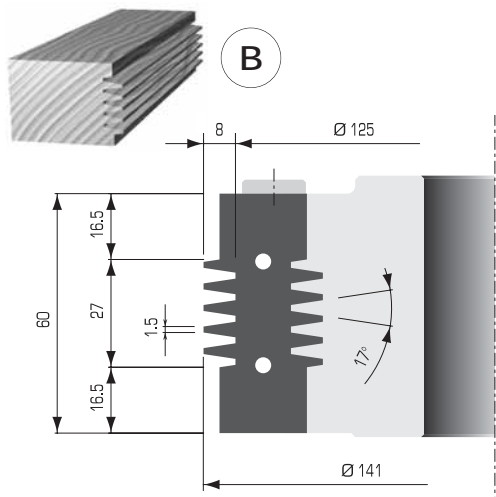
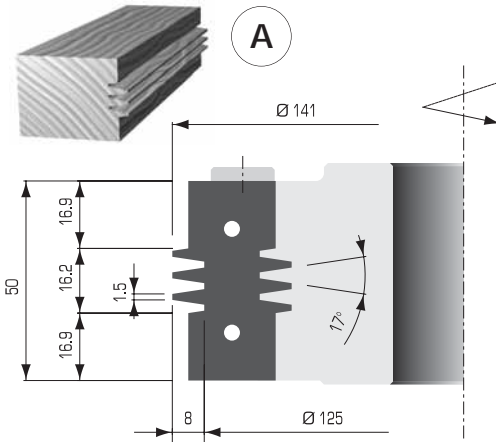
- High tensile steel body with 4 straight teeth
- Knives are positioned in the toolhead to produce "loose" joints
- By adjusting two opposite positioning screws with the use of the graduated scale (see page D25), "tight" or "loose" joints can be obtained, depending on requirements
- Reversible tungsten carbide inserts with 2 cutting edges

APPLICATION:

- For cutting edge glue joints in solid wood and panel material
- On shapers, and moulders

PART NO.	DIAM. ØD mm	KERF B mm	BORE ød	MAX. BORE ød mm	NO. TEETH	PROFILE TYPE	RPM MIN.-MAX.
1T5501M	141	50	1-1/4"	50	4	A	5600-9500
1T5503M	141	60	1-1/4"	50	4	B	5600-9500
1T5505M	145	50	1-1/4"	50	4	C	5600-9500
1T5507M	145	60	1-1/4"	50	4	D	5600-9500

Other sizes available upon request.

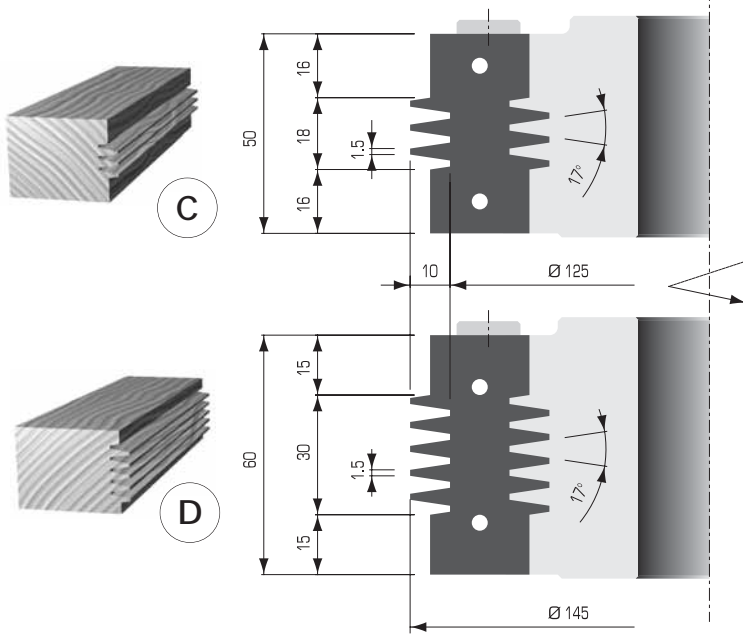


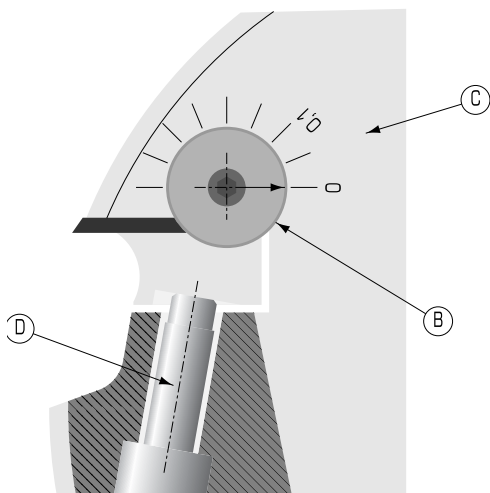
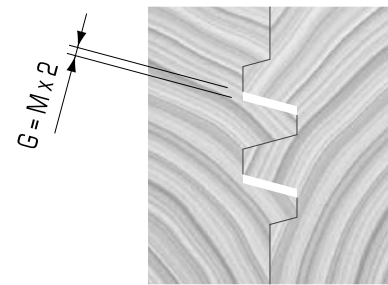
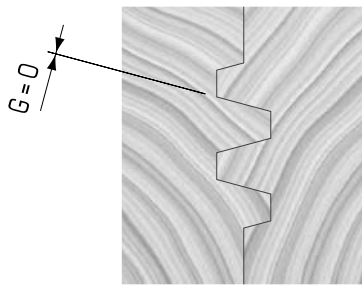
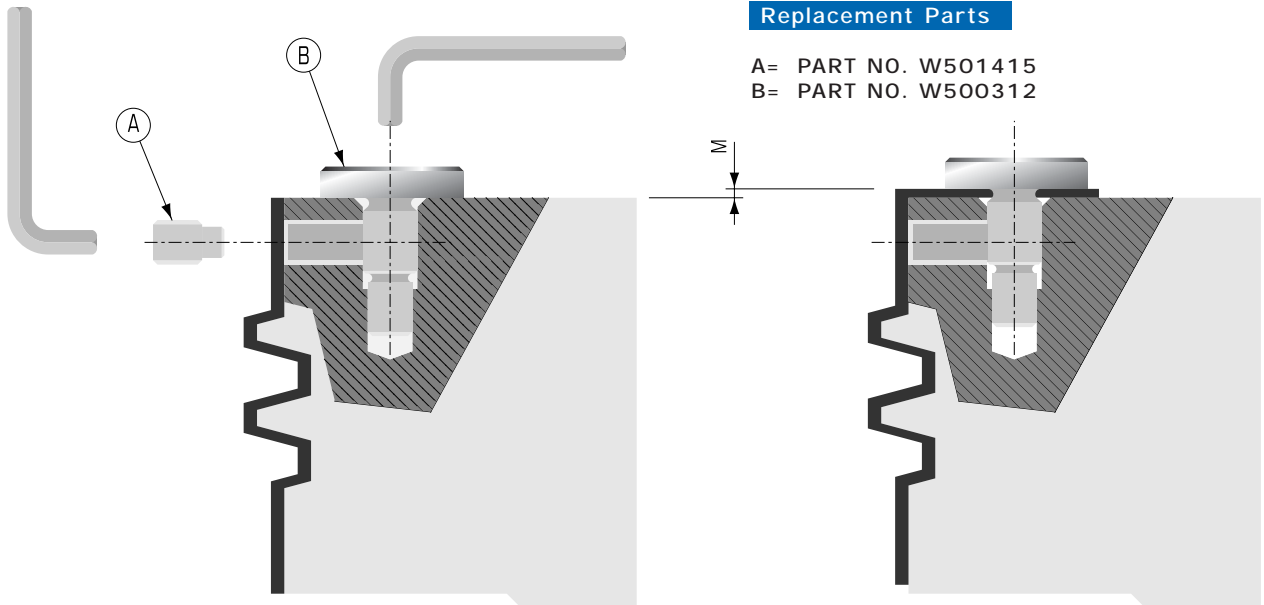
ALLEN WRENCH
 PART NO. W400001 2.5mm
 PART NO. W400003 4mm



Replacement Parts

TOOL NO.	DESCRIPTION	KNIFE	WEDGE	WEDGE SCREW
1T5501M	PART NO.	1T550A	W303008	W501410
	DIMENSIONS	50x30x2	48	M8x25
1T5503M	PART NO.	1T550B	W303009	W501410
	DIMENSIONS	60x30x2	58	M8x25
1T5505M	PART NO.	1T550C	W303006	W501410
	DIMENSIONS	50x35x2	48	M8x25
1T5507M	PART NO.	1T550D	W303007	W501410
	DIMENSIONS	60x35x2	58	M8x25





Instructions to modify type of joint with or without play by turning the graduated screw B (one notch = M 0.05mm).

INSTRUCTIONS:

- 1) Loosen screws A and B
- 2) Place screw B reference on the notch of the desired measure (e.g. 0.1)
- 3) Lock screw A
- 4) Release screws D
- 5) Place the knife against screw B
- 6) Lock screws D

In this case the joint will have a G play of 0.2mm

1T555 GLUE JOINT TOOLHEADS - ADJUSTABLE



DESIGN:

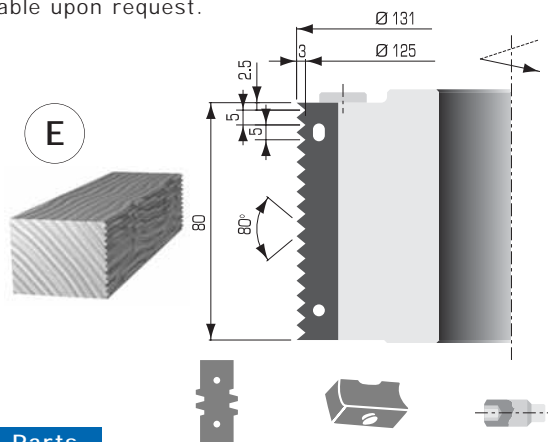
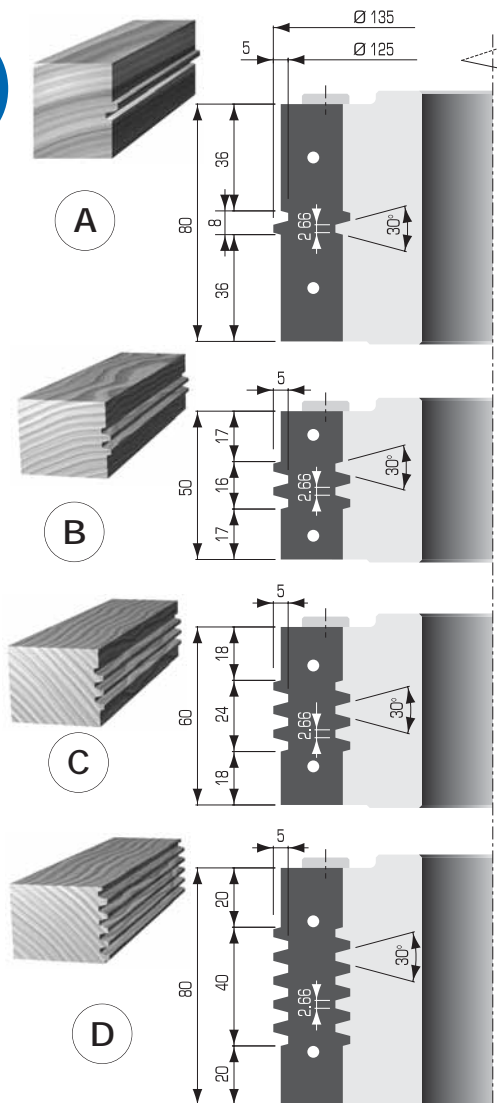
- High tensile steel body with 2 straight teeth
- Knives are positioned in the toolhead to produce "loose" joints
- By adjusting one of the positioning screws with the use of the graduated scale (see page D25), "tight" or "loose" joints can be obtained, depending on requirements
- Reversible tungsten carbide inserts with 2 cutting edges

APPLICATION:

- For cutting edge glue joints in solid wood and panel material
- On shapers and moulders

PART NO.	DIAM. ØD mm	KERF B mm	BORE ød	MAX. BORE ød mm	NO. TEETH	CUTTER TYPE	RPM MIN.-MAX.
1T5551M	135	80	1-1/4"	50	2	A	5600-9500
1T5553M	135	50	1-1/4"	50	2	B	5600-9500
1T5555M	135	60	1-1/4"	50	2	C	5600-9500
1T5557M	135	80	1-1/4"	50	2	D	5600-9500
1T5559M	131	80	1-1/4"	50	2	E	5600-9500

Other sizes available upon request.



Replacement Parts

TOOL NO.	DESCRIPTION	KNIFE	WEDGE	WEDGE SCREW
1T5551M	PART NO.	1T555A	W303013	W501410
	DIMENSIONS	80x25x2	78	M8x25
1T5553M	PART NO.	1T555B	W303004	W501410
	DIMENSIONS	50x25x2	48	M8x25
1T5555M	PART NO.	1T555C	W303012	W501410
	DIMENSIONS	60x25x2	58	M8x25
1T5557M	PART NO.	1T555D	W303013	W501410
	DIMENSIONS	80x25x2	78	M8x25
1T5559M	PART NO.	1T555E	W303005	W501404
	DIMENSIONS	80x13x2.2	78	M8x20

ALLEN WRENCH
 PART NO. W400001 2.5mm
 PART NO. W400003 4mm