

# 1T565 BEADING & COVE TOOLHEADS



**DESIGN:**

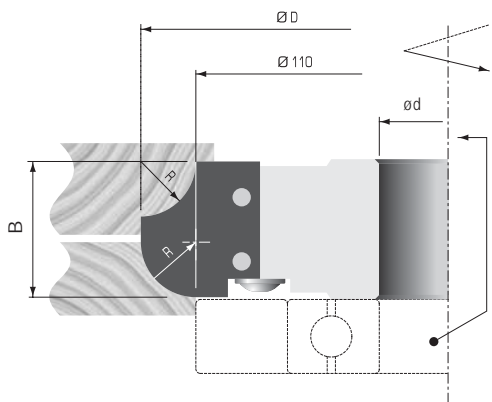
- High tensile steel body with 3 straight teeth
- Disposable tungsten carbide insert knives

**APPLICATION:**

- For producing bead and cove edges in solid wood and panel materials
- On shapers and double-end tenoners

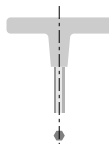
PART NO.	DIAM. ØD mm	KERF B mm	RADIUS R	BORE ød	MAX. BORE mm	NO. TEETH	RPM MIN.-MAX.
1T5651M	114	20	1/4"	1-1/4"	50	3	6600-11500
1T5653M	121	25	3/8"	1-1/4"	50	3	6100-10600
1T5655M	127	30	1/2"	1-1/4"	50	3	5800-10200
1T5657M	133	35	5/8"	1-1/4"	50	3	5700-9800
1T5658M	140	50	3/4"	1-1/4"	50	3	5500-9400

Other sizes available upon request.



**Replacement Parts**

TOOL NO.	DESCRIPTION	KNIFE	WEDGE	WEDGE SCREW
1T5651M	PART NO.	1T565A	W340006	W501404
	DIMENSIONS	20x25x2	15	M8x20
1T5653M	PART NO.	1T565B	W049801	W501404
	DIMENSIONS	25x25x2	20	M8x20
1T5655M	PART NO.	1T565C	W340026	W501316
	DIMENSIONS	30x30x2	26	M6x20
1T5657M	PART NO.	1T565D	W340027	W501316
	DIMENSIONS	35x30x2	31	M6x20
1T5658M	PART NO.	1T565E	W049771	W501404
	DIMENSIONS	50x35x2	46	M8x20



T-HANDLE ALLEN WRENCH  
PART NO. W400114 4mm