

# 1T570 HALF ROUND TOOLHEADS



### DESIGN:

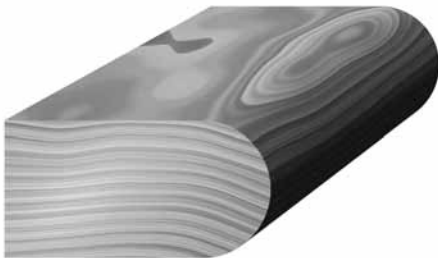
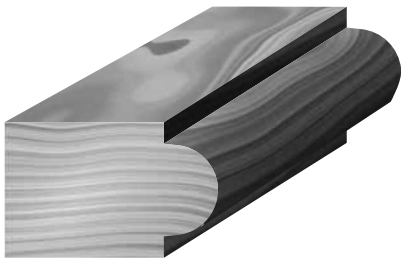
- High tensile steel body with 3 straight teeth
- Disposable tungsten carbide insert knives

### APPLICATION:

- For producing half round edges in solid wood and panel materials
- On shapers, double-end tenoners and moulders

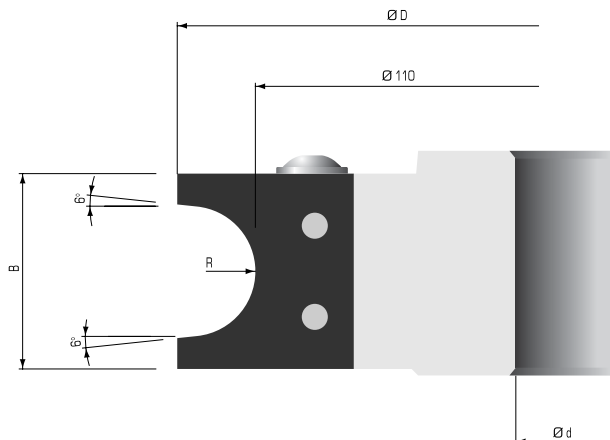
PART NO.	DIAM. ØD mm	KERF B mm	RADIUS R	CUTTER OPENING B1mm	BORE ød	MAX BORE ød mm	NO. TEETH	RPM MIN.-MAX.
1T5701M	122	20	1/4"	13.0	1-1/4"	50	3	6100-10600
1T5703M	126	30	3/8"	19.5	1-1/4"	50	3	5800-10200
1T5705M	133	35	1/2"	26.0	1-1/4"	50	3	5700-9800
1T5707M	137	40	5/8"	32.3	1-1/4"	50	3	5500-9400
1T5708M	142	50	3/4"	38.5	1-1/4"	50	3	5300-9100

Other sizes available upon request.



### Replacement Parts

TOOL NO.	DESCRIPTION	KNIFE	WEDGE	WEDGE SCREW
1T5701M	PART NO.	1T570A	W049801	W501404
	DIMENSIONS	25x25x2	20	M8x20
1T5703M	PART NO.	1T570B	W340026	W501316
	DIMENSIONS	30x25x2	26	M6x20
1T5705M	PART NO.	1T570C	W0081201	W501404
	DIMENSIONS	35x30x2	32x11x9.5	M8x20
1T5707M	PART NO.	1T570D	W049631	W501404
	DIMENSIONS	40x30x2	36x11x9.5	M8x20
1T5708M	PART NO.	1T570E	W049771	W501404
	DIMENSIONS	50x35x2	46	M8x20



T-HANDLE ALLEN WRENCH  
PART NO. W400115 5mm