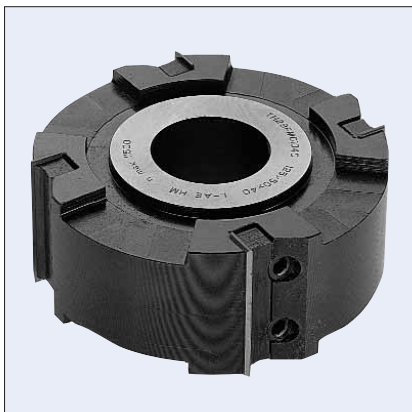


1T474 INTERLOCKING - STACKABLE TOOLHEADS



DESIGN:

- High tensile steel body with 4 straight teeth
- Toolheads interlock and can be stacked to required cutting width
- When stacked, the insert knives overlap each other
- Reversible tungsten carbide insert knives with 2 cutting edges

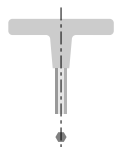
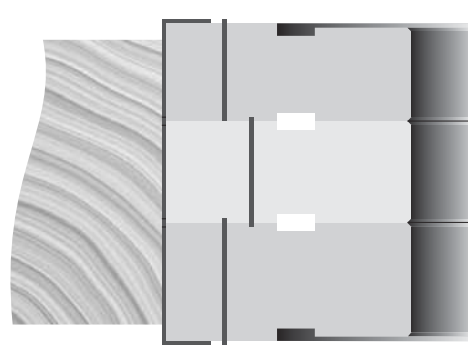
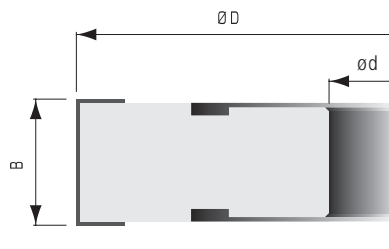
APPLICATION:

- For surface planing, jointing, and preplaning on the first bottom spindle
- On moulders and four-sided planers



PART NO.	DIAM ØD mm	KERF B mm	BORE ød mm	MAX. BORE ød mm	NO. TEETH	RPM MIN.-MAX.
1T4742M	125	30	40	50	4	6000-11500
1T4745M	125	50	40	50	4	6000-11500

Other sizes available upon request.

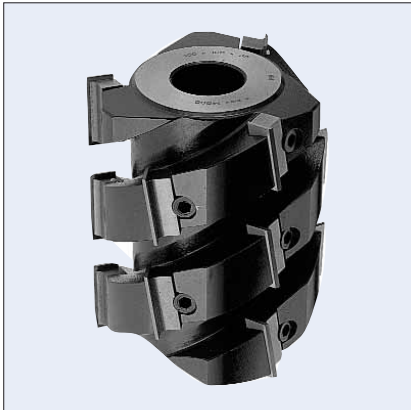


T-HANDLE ALLEN WRENCH
PART NO. W400115 5MM



Replacement Parts

TOOL NO.	DESCRIPTION	KNIFE	WEDGE	WEDGE SCREW
1T4742M	PART NO.	303000	W350007	W502402
	DIMENSIONS	30x12x1.5	26	M7x21
1T4745M	PART NO.	305000	W350009	W502402
	DIMENSIONS	50x12x1.5	46	M7x21

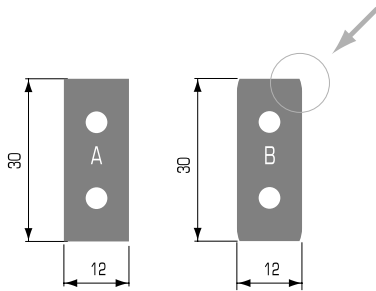


DESIGN:

- High tensile steel body with staggered knives on a shear angle and spiral progression
- Toolheads supplied with type "A" reversible inserts, type "B" knives for superior surface finish are available upon request
- Reversible tungsten carbide insert knives with 2 cutting edges
- Design of toolhead reduces noise levels

APPLICATION:

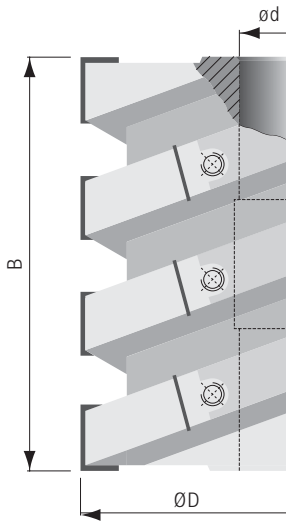
- For surface planing, jointing, and preplaning on 1st bottom spindle
- Ideal for machining curved furniture components
- On shapers, moulders and four-sided planers



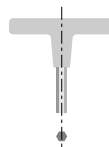
PART NO.	DIAM ØD	KERF B	BORE ød	MAX. BORE ød mm	NO. TEETH	RPM MIN.-MAX.
1T4751I	4"	3-7/8"	1-1/4"	35	12	7500-13000
1T4752I	4"	4-51/64"	1-1/4"	35	15	7500-13000
1T4751M	125mm	99mm	40mm	50	12	6000-11000
1T4752M	125mm	122mm	40mm	50	15	6000-11000
1T4753M	125mm	145mm	40mm	50	18	6000-11000
1T4754M	125mm	191mm	40mm	50	24	6000-11000
1T4755M	125mm	228mm	40mm	50	30	6000-11000

Other sizes available upon request.

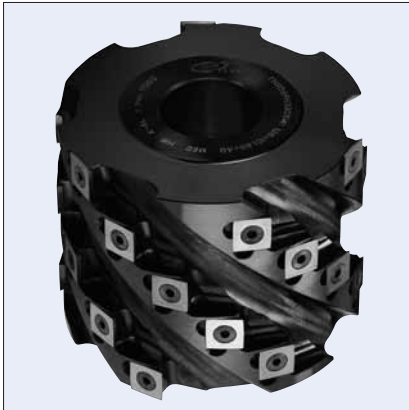
Also available in aluminum body by special order. Prices quoted upon request.



Replacement Parts				
DESCRIPTION	KNIFE TYPE A	KNIFE TYPE B	WEDGE	WEDGE SCREW
PART NO.	303000	303000R	W350063	W502402
DIMENSIONS	30x12x1.5	30x12x1.5	26	M7x21



T-HANDLE ALLEN WRENCH
PART NO. W400115 5MM



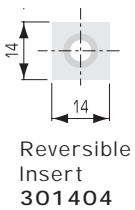
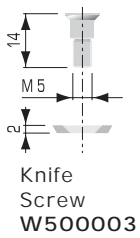
DESIGN:

- Surface treated steel or aluminum body helical toolhead with 4-6-8 helices
- Spiral and staggered design enables heavy stock removal with or against the wood grain
- Toolheads can be custom made with spurs on one or both sides for tenoning and rabbet cuts
- Reversible tungsten carbide inserts with 4 cutting edges

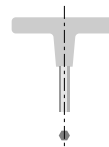
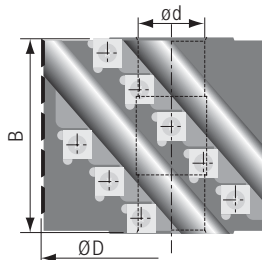
APPLICATION:

- For surface planing, jointing, and preplaning in solid wood on the 1st bottom spindle
- Ideal for machining curved furniture components
- On shapers, double-end tenoners, surface planers and moulders

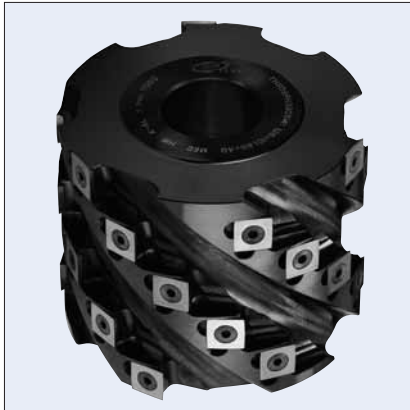
PART NO. STEEL BODY	PART NO. ALUMINUM BODY	DIAM ØD mm	KERF B mm	BORE ød mm	MAX BORE ødmm	NO. helices	NO. INSERT KNIVES	RPM MIN.-MAX.
1T47601	1T47701	80	89	1-1/4"	35	4	14	9500-16000
1T47603	1T47703	100	102	1-1/4"	40	4	16	7500-13000
1T47605	1T47705	125	102	40	60	4	16	6000-10000
1T47606	1T47706	125	127	40	60	4	20	6000-10000
1T47607	1T47707	125	151.5	40	60	4	24	6000-10000
1T47608	1T47708	125	177	40	60	4	28	6000-10000
1T47609	1T47709	125	227	40	60	4	36	6000-10000
1T47610	1T47710	125	102	40	60	6	27	6000-10000
1T47611	1T47711	125	127	40	60	6	30	6000-10000
1T47612	1T47712	125	151.5	40	60	6	36	6000-10000
1T47613	1T47713	125	177	40	60	6	42	6000-10000
1T47614	1T47714	125	227	40	60	6	54	6000-10000
1T47615	1T47715	140	102	40	60	6	27	5500-9500
1T47616	1T47716	140	127	40	60	6	30	5500-9500
1T47617	1T47717	140	151.5	40	60	6	36	5500-9500
1T47618	1T47718	140	177	40	60	6	42	5500-9500
1T47619	1T47719	140	227	40	60	6	54	5500-9500
1T47620	1T47720	140	102	40	60	8	32	5500-9500
1T47621	1T47721	140	127	40	60	8	40	5500-9500
1T47622	1T47722	140	151.5	40	60	8	48	5500-9500
1T47623	1T47723	140	177	40	60	8	56	5500-9500
1T47624	1T47724	140	227	40	60	8	72	5500-9500



Other sizes available upon request up to a maximum diameter of 300mm and 4-6-8-10 helices.



T-HANDLE TORX WRENCH
PART NO. W400420 T20

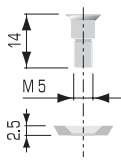


DESIGN:

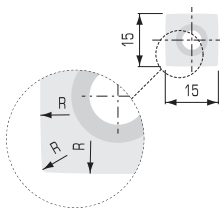
- Surface treated steel or aluminum body helical toolhead with 4-6-8 helices
- Spiral and staggered design along with rounded corner reversible inserts provide superior surface finish
- Toolheads can be custom made with spurs on one or both sides for tenoning and rabbet cuts
- Reversible tungsten carbide inserts with 4 rounded edges and 4 radiused corners (see drawing)

APPLICATION:

- For surface planing, jointing, and preplaning in solid wood
- On shapers, double-end tenoners, surface planers and moulders



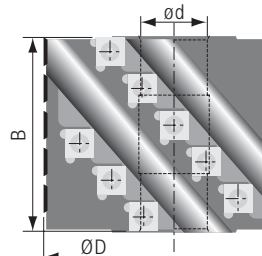
Knife Screw
W500003



Reversible Insert
301525

PART NO. STEEL BODY	PART NO. ALUMINUM BODY	DIAM ØD mm	KERF B mm	BORE ød mm	MAX BORE ødmm	NO. helices	NO. INSERT KNIVES	RPM MIN.-MAX.
1T48001	1T48101	80	83	1-1/4"	35	4	18	9500-16000
1T48003	1T48103	100	102	1-1/4"	40	4	20	7500-13000
1T48005	1T48105	125	102	40	60	4	20	6000-10000
1T48006	1T48106	125	131	40	60	4	26	6000-10000
1T48007	1T48107	125	150	40	60	4	30	6000-10000
1T48008	1T48108	125	179	40	60	4	36	6000-10000
1T48009	1T48109	125	227	40	60	4	46	6000-10000
1T48010	1T48110	125	102	40	60	6	30	6000-10000
1T48011	1T48111	125	131	40	60	6	39	6000-10000
1T48012	1T48112	125	150	40	60	6	45	6000-10000
1T48013	1T48113	125	179	40	60	6	54	6000-10000
1T48014	1T48114	125	227	40	60	6	69	6000-10000
1T48015	1T48115	140	102	40	60	6	30	5500-9500
1T48016	1T48116	140	131	40	60	6	39	5500-9500
1T48017	1T48117	140	150	40	60	6	45	5500-9500
1T48018	1T48118	140	179	40	60	6	54	5500-9500
1T48019	1T48119	140	227	40	60	6	69	5500-9500
1T48020	1T48120	140	102	40	60	8	40	5500-9500
1T48021	1T48121	140	131	40	60	8	52	5500-9500
1T48022	1T48122	140	150	40	60	8	60	5500-9500
1T48023	1T48123	140	179	40	60	8	72	5500-9500
1T48024	1T48124	140	227	40	60	8	92	5500-9500

Other sizes available upon request up to a maximum diameter of 300mm and 4-6-8-10 helices.



T-HANDLE TORX WRENCH
PART NO. W400420 T20

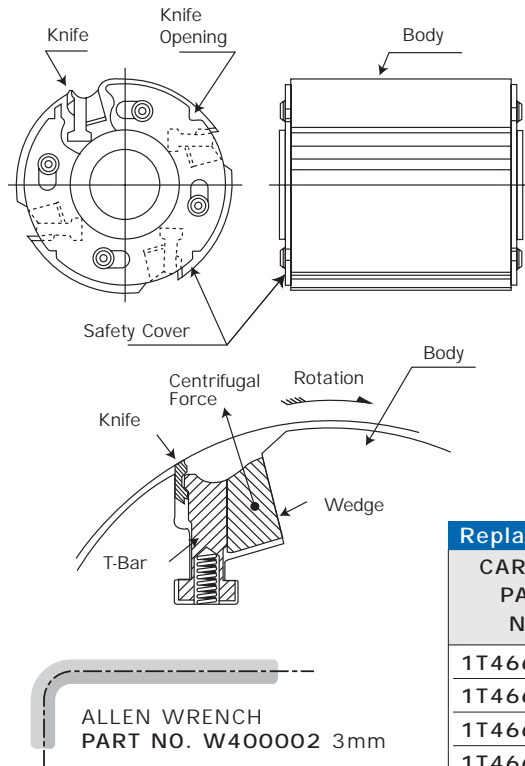


DESIGN:

- High tensile steel body with 4 straight teeth
- Unique centrifugal self locking system accurately locks knives in place
- The reversible double edged knives with unique chipbreaker design and polished edges provide an ultra smooth surface finish
- Toolhead supplied without knives
- Knives available in surface treated HSS and in micro-grain mirror-finish solid carbide

APPLICATION:

- For surface planing and jointing in solid wood, panel materials, plastics and cellulose



PART NO.	DIAM. ØD mm	KERF B mm	BORE ød	NO. TEETH	RPM MIN.-MAX.
1T46622	125	80	40mm	4	6000-8000
1T46624	125	100	40mm	4	6000-8000
1T46626	125	130	40mm	4	6000-8000
1T46628	125	150	40mm	4	6000-8000
1T46630	125	180	40mm	4	6000-8000
1T46632	125	230	40mm	4	6000-8000
1T46642	140	80	1-13/16"	4	5500-7000
1T46644	140	100	1-13/16"	4	5500-7000
1T46646	140	130	1-13/16"	4	5500-7000
1T46648	140	150	1-13/16"	4	5500-7000
1T46650	140	180	1-13/16"	4	5500-7000
1T46652	140	230	1-13/16"	4	5500-7000

Other sizes available upon request.

Replacement Knives

CARBIDE PART NO.	HSS PART NO.	CUTTING LENGTH mm	WIDTH mm	THICKNESS mm	NO. OF KNIVES PER PACKAGE
1T466C080	1T466H080	80	8	2	12
1T466C100	1T466H100	100	8	2	12
1T466C130	1T466H130	130	8	2	12
1T466C150	1T466H150	150	8	2	12
1T466C180	1T466H180	180	8	2	12
1T466C230	1T466H230	230	8	2	12

Replacement Parts

TOOL NO.	DESCRIPTION	WEDGE	T-BAR	END PLATE SCREW	GIB RELEASE PUNCH
1T46622/42	PART NO.	W800100	W800120	W800140	W800142
1T46624/44	PART NO.	W800102	W800122	W800140	W800142
1T46626/46	PART NO.	W800104	W800124	W800140	W800142
1T46628/48	PART NO.	W800106	W800126	W800140	W800142
1T46630/50	PART NO.	W800108	W800128	W800140	W800142
1T46632/52	PART NO.	W800110	W800130	W800140	W800142