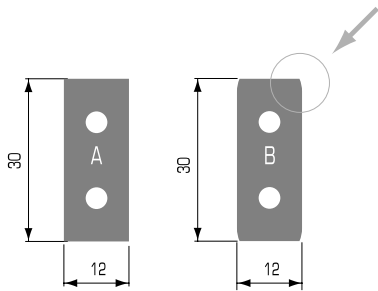


DESIGN:

- High tensile steel body with staggered knives on a shear angle and spiral progression
- Toolheads supplied with type "A" reversible inserts, type "B" knives for superior surface finish are available upon request
- Reversible tungsten carbide insert knives with 2 cutting edges
- Design of toolhead reduces noise levels

APPLICATION:

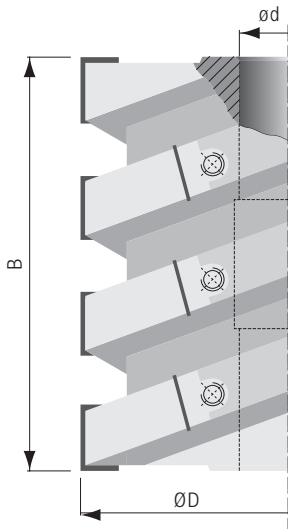
- For surface planing, jointing, and preplaning on 1st bottom spindle
- Ideal for machining curved furniture components
- On shapers, moulders and four-sided planers



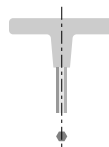
PART NO.	DIAM ØD	KERF B	BORE ød	MAX. BORE ød mm	NO. TEETH	RPM MIN.-MAX.
1T4751I	4"	3-7/8"	1-1/4"	35	12	7500-13000
1T4752I	4"	4-51/64"	1-1/4"	35	15	7500-13000
1T4751M	125mm	99mm	40mm	50	12	6000-11000
1T4752M	125mm	122mm	40mm	50	15	6000-11000
1T4753M	125mm	145mm	40mm	50	18	6000-11000
1T4754M	125mm	191mm	40mm	50	24	6000-11000
1T4755M	125mm	228mm	40mm	50	30	6000-11000

Other sizes available upon request.

Also available in aluminum body by special order. Prices quoted upon request.



Replacement Parts				
DESCRIPTION	KNIFE TYPE A	KNIFE TYPE B	WEDGE	WEDGE SCREW
PART NO.	303000	303000R	W350063	W502402
DIMENSIONS	30x12x1.5	30x12x1.5	26	M7x21



T-HANDLE ALLEN WRENCH
PART NO. W400115 5MM