

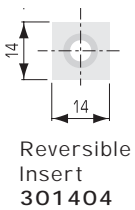
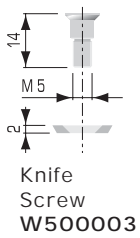
DESIGN:

- Surface treated steel or aluminum body helical toolhead with 4-6-8 helices
- Spiral and staggered design enables heavy stock removal with or against the wood grain
- Toolheads can be custom made with spurs on one or both sides for tenoning and rabbet cuts
- Reversible tungsten carbide inserts with 4 cutting edges

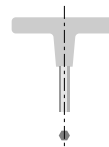
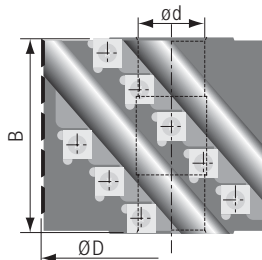
APPLICATION:

- For surface planing, jointing, and preplaning in solid wood on the 1st bottom spindle
- Ideal for machining curved furniture components
- On shapers, double-end tenoners, surface planers and moulders

PART NO. STEEL BODY	PART NO. ALUMINUM BODY	DIAM ØD mm	KERF B mm	BORE ød mm	MAX BORE ødmm	NO. helices	NO. INSERT KNIVES	RPM MIN.-MAX.
1T47601	1T47701	80	89	1-1/4"	35	4	14	9500-16000
1T47603	1T47703	100	102	1-1/4"	40	4	16	7500-13000
1T47605	1T47705	125	102	40	60	4	16	6000-10000
1T47606	1T47706	125	127	40	60	4	20	6000-10000
1T47607	1T47707	125	151.5	40	60	4	24	6000-10000
1T47608	1T47708	125	177	40	60	4	28	6000-10000
1T47609	1T47709	125	227	40	60	4	36	6000-10000
1T47610	1T47710	125	102	40	60	6	27	6000-10000
1T47611	1T47711	125	127	40	60	6	30	6000-10000
1T47612	1T47712	125	151.5	40	60	6	36	6000-10000
1T47613	1T47713	125	177	40	60	6	42	6000-10000
1T47614	1T47714	125	227	40	60	6	54	6000-10000
1T47615	1T47715	140	102	40	60	6	27	5500-9500
1T47616	1T47716	140	127	40	60	6	30	5500-9500
1T47617	1T47717	140	151.5	40	60	6	36	5500-9500
1T47618	1T47718	140	177	40	60	6	42	5500-9500
1T47619	1T47719	140	227	40	60	6	54	5500-9500
1T47620	1T47720	140	102	40	60	8	32	5500-9500
1T47621	1T47721	140	127	40	60	8	40	5500-9500
1T47622	1T47722	140	151.5	40	60	8	48	5500-9500
1T47623	1T47723	140	177	40	60	8	56	5500-9500
1T47624	1T47724	140	227	40	60	8	72	5500-9500



Other sizes available upon request up to a maximum diameter of 300mm and 4-6-8-10 helices.



T-HANDLE TORX WRENCH
PART NO. W400420 T20