


**DESIGN:**

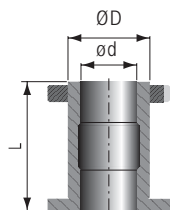
- High tensile steel body with 2 or 4 teeth and 2 or 4 spurs
- Set of cutters mounted on sleeves and adjustable by spacers and shims to produce a variety of tongue and groove profiles. See details on pages D50 - D51
- Toolheads sold individually, for profile selection refer to pages D50 - D51
- Tungsten carbide inserts with 2 or 4 cutting edges

**APPLICATION:**

- For producing various tongue and groove profiles in solid wood and panel materials
- On moulders

PART NO.	DIAM ØD mm	KERF B mm	BORE ød mm	NO. TEETH	NO. SPURS	NO. GROOVING INSERTS	NO. CHAMFERING INSERTS	TOOL TYPE	RPM MIN. - MAX.
1T2511M	140	15	50	4	2			1	5500 - 10000
1T2512M	140	15	50	4	2			2	5500 - 10000
1T2513M	127	12	50	2			2	3	5800 - 10000
1T2514M	155	20	50	4		2		4	4900 - 10000
1T2515M	155	20	50	4		2		5	4900 - 10000
1T2516M	139	15	50	4	2			6	5500 - 10000
1T2517M	175	15	50	4	2			7	4400 - 8000
1T2518M	155	20	50	4		2		8	4900 - 9000
1T2519M	160	15	50	4	2			9	4800 - 9000
1T25110M	155	20	50	4		2		10	4900 - 9000
1T25111M	168	20	50	4		2		11	4500 - 9500
1T25112M	149	15	50	4	2			12	5100 - 9500
1T25113M	168	20	50	4		2		13	4500 - 8500
1T25114M	168	20	50	4		2		14	4500 - 8500
1T25115M	154	12	50	2				15	4900 - 9000
1T25116M	154	12	50	2				16	4900 - 9000

Other sizes available upon request.


**MECHANICAL SLEEVES**

		D	L	d	PART NO.
RH		50	105	1-1/4	W05950105114R
		50	105	1-1/2	W05950105112R
		50	105	40	W05950105040R
LH		50	105	1-1/4	W05950105114L
		50	105	1-1/2	W05950105112L
		50	105	40	W05950105040L

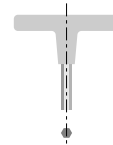


## Replacement Parts

TOOL NO.	DESCRIPTION	KNIFE	WEDGE	WEDGE SCREW	SPUR	SPUR SCREW	GROOVING INSERT	SCREW	CHAMFER INSERT
1,2,6	PART NO.	301500	W350004	W502404	301404	W500002			
	DIMENSIONS	15x12x1.5	11	M7x19	14x14x2	M5x7			
7,9,12	PART NO.	301500	W350004	W502402	301404	W500002			
	DIMENSIONS	15x12x1.5	11	M7x21	14x14x2	M5x7			
3	PART NO.	301200	W350023	W502403				W500201	30600601/02
	DIMENSIONS	12x12x1.5	9	M5x18				M6x12	27x6x14
4	PART NO.	302000	W350005	W502402			307809	W500205	
	DIMENSIONS	20x12x1.5	16	M7x21			48x4x16	M6x15	
5	PART NO.	302000	W350005	W502402			307810	W500205	
	DIMENSIONS	20x12x1.5	16	M7x21			48x4x16	M6x15	
8,10, 13,14	PART NO.	302000	W350005	W502402			307810	W500205	
	DIMENSIONS	20x12x1.5	16	M7x21			48x4x16	M6x15	
11	PART NO.	302000	W350005	W502402			307831	W500205	
	DIMENSIONS	20x12x1.5	16	M7x21			60x4x16	M6x15	
15,16	PART NO.	301200	W350023	W502403					
	DIMENSIONS	12x12x1.5	9	M5x18					



T-HANDLE ALLEN WRENCH  
PART NO. W400114 4mm  
PART NO. W400115 5mm



T-HANDLE TORX WRENCH  
PART NO. W400420 T20

For profile selection see page D50 - D51

# 1T251 ADJUSTABLE TONGUE AND GROOVE TOOLHEADS

