

1T471 PLANING AND JOINTING TOOLHEADS

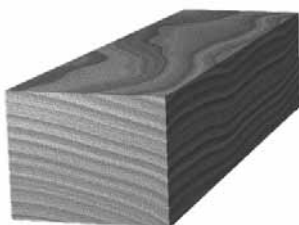


DESIGN:

- High tensile steel body with 2 or 4 straight teeth
- Reversible tungsten carbide inserts with 2 cutting edges

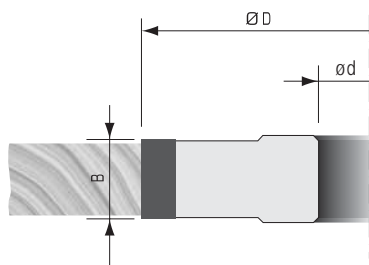
APPLICATION:

- For planing and jointing solid woods with the grain and in uncoated panels.
- On shapers and double-end tenoners



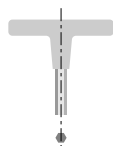
PART NO.	DIAM. ØD mm	KERF B mm	BORE ød	MAX. BORE ød mm	NO. TEETH	RPM MIN.-MAX.
1T4710M	85	100	1-1/4"	30	2	9000-15700
1T4711M	100	50	1-1/4"	35	2	7700-13300
1T4712M	125	30	1-1/4"	50	2	6100-10700
1T4713M	125	50	1-1/4"	50	2	6100-10700
1T4714M	125	50	1-1/4"	50	4	6100-10700

Other sizes available upon request.



Replacement Parts

TOOL NO.	DESCRIPTION	KNIFE	WEDGE	WEDGE SCREW
1T4712M	PART NO.	303000	W350007	W502402
	DIMENSIONS	30x12x1.5	26	M7x21
1T4711M 1T4713M 1T4714M	PART NO.	305000	W350009	W502402
	DIMENSIONS	50x12x1.5	46	M7x21
1T4710M	PART NO.	310000	W350018	W502402
	DIMENSIONS	100x13x2.2	94	M7x21



T-HANDLE ALLEN WRENCH
PART NO. W400115 5mm



DESIGN:

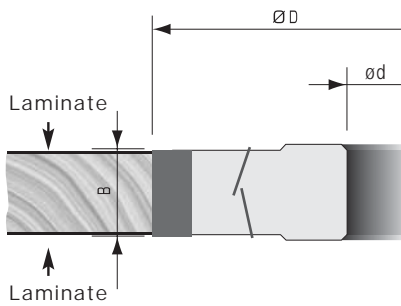
- High tensile steel body, (2+2) or (3+3) teeth with opposing (compression) shear angle for chip free edges
- Reversible tungsten carbide inserts with 2 cutting edges

APPLICATION:

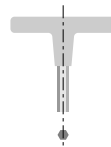
- For chip-free jointing of laminated panels
- On shapers, double-end tenoners and edgebanders

PART NO.	DIAM. ØD mm	KERF B mm	BORE ød	MAX. BORE ødmm	NO. TEETH	RPM MIN. - MAX.
1T4801M	125	56	1-1/4"	50	2+2	6100-10700
1T4803M	125	56	1-1/4"	50	3+3	6100-10700
1T4805M	150	56	1-1/4"	50	2+2	5000-9000
1T4807M	150	56	1-1/4"	50	3+3	5000-9000
1T4809M	180	56	1-1/4"	50	3+3	4200-7500

Other sizes available upon request.



Replacement Parts			
DESCRIPTION	KNIFE	WEDGE	WEDGE SCREW
PART NO.	303000	W350007	W502402
DIMENSIONS	30x12x1.5	26	M7x21



T-HANDLE ALLEN WRENCH
PART NO. W400115 5mm

1T410 SHAPING AND PLANING TOOLHEADS



DESIGN:

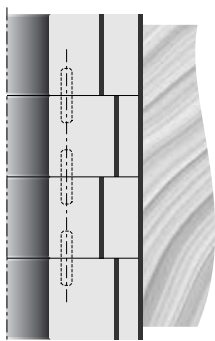
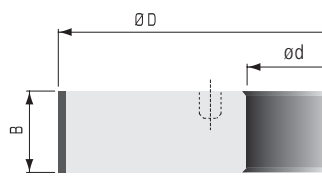
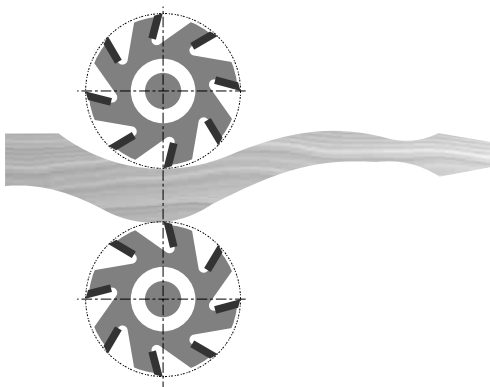
- High tensile steel body with 3 straight teeth
- Cutters pinned together
- Toolheads can be stacked to cut various wood thickness
- Reversible Tungsten carbide inserts with 2 cutting edges

APPLICATION:

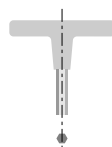
- For jointing and shaping solid wood components
- On shapers and CNC machines

PART NO.	DIAM. ØD mm	KERF B mm	BORE ød	MAX. BORE ød mm	NO. TEETH	RPM MIN.-MAX.
1T4101M	90	30	31.75	31.75	3	8500-17000
1T4102M	100	30	31.75	35	3	7500-15000

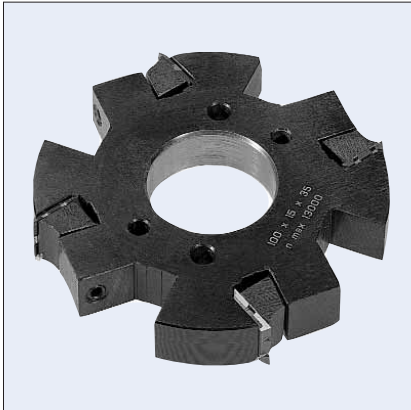
Other sizes available upon request.



Replacement Parts			
DESCRIPTION	KNIFE	WEDGE	WEDGE SCREW
PART NO.	303000	W300205	W501303
DIMENSIONS	30x12x1.5	28	M8x10



T-HANDLE ALLEN WRENCH
PART NO. W400114 4mm



DESIGN:

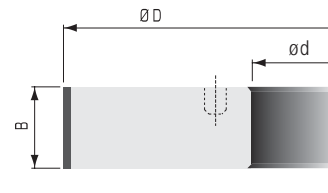
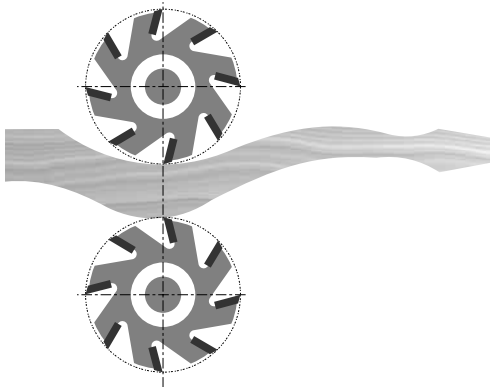
- High tensile steel body with 4 straight teeth
- Cutters pinned together
- Toolheads can be stacked to cut various wood thickness
- Reversible Tungsten carbide inserts with 4 cutting edges and chipbreakers
- Chipbreaker allows for heavier stock removal

APPLICATION:

- For jointing and shaping solid wood components
- On shapers and CNC machines

PART NO.	DIAM. ØD mm	KERF B mm	BORE ød	MAX. BORE ød mm	NO. TEETH	RPM MIN.-MAX.
1T411M	100	15	1-1/4"	35	4	7500-13000

Other sizes available upon request.



Replacement Parts

DESCRIPTION	KNIFE	WEDGE	WEDGE SCREW
PART NO.	301505	W300701	W501302
DIMENSIONS	15x15x2	14.5	M6x16



T-HANDLE ALLEN WRENCH
PART NO. W400113 3mm

1T412 HELICAL TOOLHEADS - STEEL BODY

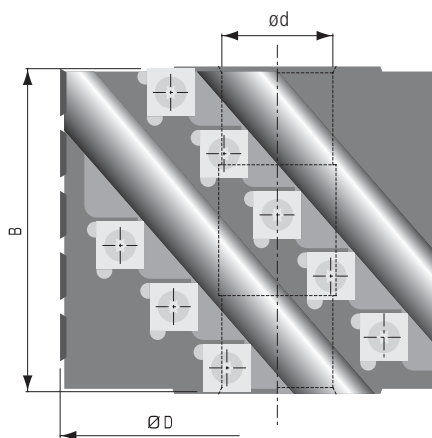


DESIGN:

- High tensile steel body with 4 helical wings
- Tungsten carbide reversible inserts with 4 cutting edges
- Staggered teeth and helical design provide for greater stock removal and superior surface finish
- Ball bearing guide and flange sleeve can be supplied upon request
- Toolheads can be stacked to cut various wood thickness

APPLICATION:

- For jointing and shaping solid wood components
- On shapers



PART NO.	DIAM. ØD mm	KERF B mm	BORE ød mm	MAX. BORE ød mm	NO. WINGS	TOTAL NO. KNIVES	RPM MIN.-MAX.
1T4121M	80	81.5	1-1/4"	35	4	14	9500-15000
1T4123M	80	126.5	1-1/4"	35	4	20	9500-15000

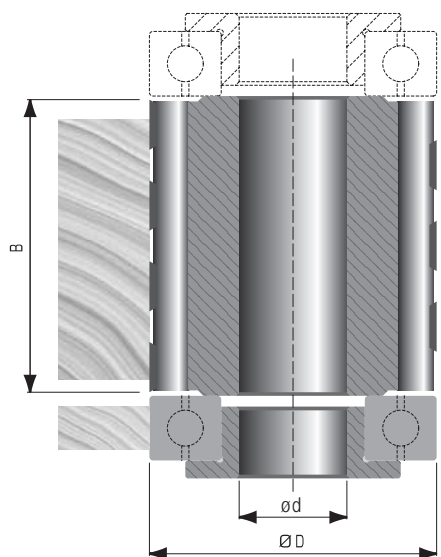
Other sizes available upon request.

BEARING GUIDE

PART NO.	DIAM. ØDmm	BORE ødmm
W057114-80	80	40

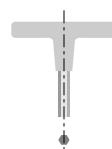
FLANGE SLEEVE

PART NO.	O.D. ØDmm	I.D. ød
O54-40-3175	40	1-1/4"



Replacement Parts

DESCRIPTION	KNIFE	KNIFE SCREW
PART NO.	301404	W500003
DIMENSIONS	14x14x2	M5x14



T-HANDLE TORX WRENCH
PART NO. W400420 T20