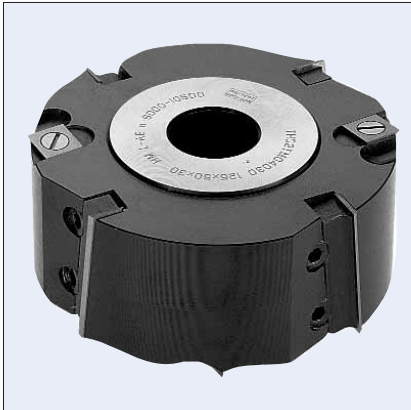


1T472 RABBETING TOOLHEADS



DESIGN:

- High tensile steel body with 2 or 4 teeth, alternating shear angle and with 4 spurs
- Tungsten carbide reversible inserts with 2 cutting edges on the teeth and 4 cutting edges on the spurs

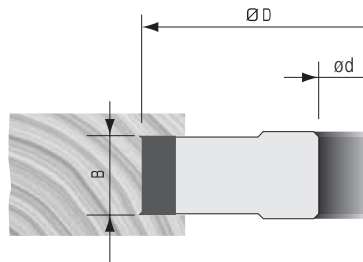
APPLICATION:

- For jointing and rabbeting solid woods with the grain and in uncoated panels
- On shapers, double-end tenoners and moulders

PART NO.	DIAM. ØD mm	KERF B mm	BORE ød	MAX. BORE ød mm	NO. TEETH	NO. SPURS	RPM MIN.-MAX.
1T4721M	125	30	1-1/4"	50	2	4	6100-10700
1T4722M	125	50	1-1/4"	50	2	4	6100-10700
1T4723M	125	50	1-1/4"	50	4	4	6100-10700
1T4724M	140	50	1-1/4"	50	4	4	5500-9500
1T4726M	180	50	1-1/4"	50	4	4	4300-7500



Other sizes available upon request.



Replacement Parts

TOOL NO.	DESCRIPTION	KNIFE	WEDGE	WEDGE SCREW	SPUR	SPUR SCREW
1T4721M	PART NO.	303000	W350007	W502402	301404	W500002
	DIMENSIONS	30x12x1.5	26	M7x21	14x14x2	M5x7
1T4722M/4M	PART NO.	305000	W350009	W502402	301404	W500002
	DIMENSIONS	50x12x1.5	46	M7x21	14x14x2	M5x7



T-HANDLE ALLEN WRENCH
PART NO. W400115 5mm